

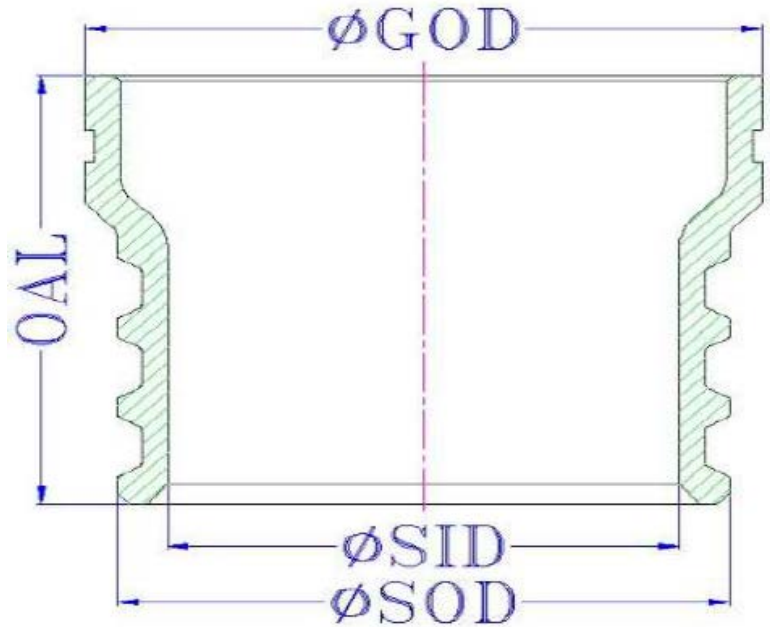
# Layflat Hose Couplings

## Stainless Steel Layflat Hose Couplings for Produced Water

Coupling material: **SS316 Stem**

Segment Clamp material: aluminum painted in black

Segment Clamp Bolt material: carbon steel plated



Size	grooves	Segment	Bolt Torque	Working Pressure	GOD	SID	SOD	OAL	Weight
			FT*LBS	PSI	Inch	Inch	Inch	Inch	LBS
8"	3	3	60	200	8.63	0.00	7.99	0.0	0.0
10"	3	3	60	200	10.75	9.02	9.98	5.51	23.6
12"	4	4	80	200	12.75	11.02	11.97	6.46	34.7



Liverpool Location ISO 9001:2015 Certified QMS by Intertek

Download the JGB® Mobile App



Click for directions:

**New England Region**  
Liverpool, NY 13088  
(315) 451-2770

**Great Lakes Region**  
Cheektowaga, NY 14225  
(716) 684-8224

**Mid-Atlantic Region**  
Charlotte, NC 28273  
(704) 588-9920

**Midwest Region**  
St. Louis, MO 63111  
(314) 256-0833

**Gulf Coast Region**  
Pasadena, TX 77503  
(281) 930-7777

Connect with us:



[www.jgbhose.com](http://www.jgbhose.com)