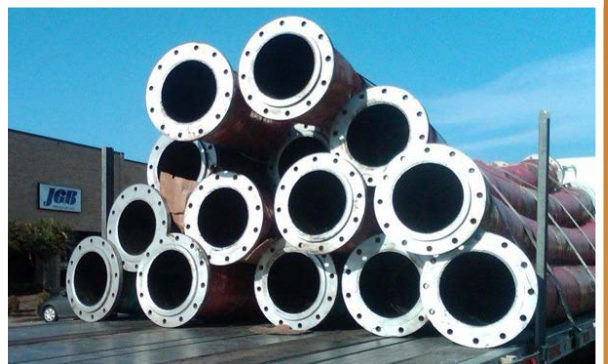


**LARGE DIAMETER HOSE
(LDH)
PROGRAM**



JGB® Enterprises, Inc.
115 Metropolitan Park Drive
Liverpool, N.Y. 13088
(315) 451-2770
www.jgbhose.com

OVERVIEW



JGB®'s Large Diameter Hose (LDH) division was born from our clients' demand for quick response assemblies. From standard Sewer By-pass, Well Point jobs, and De-watering services, to emergency response irrigation & flood zone application, JGB® has the LDH Hose, Fittings, and Assemblies for you!

JGB® Enterprises, Inc. offers every style of industrial hose, fittings, and hose assemblies to the commercial sector. JGB® leads the industry in the manufacturing of custom hose assemblies, including large diameter hose (LDH). Whether your application involves...

- Standard sewer by-pass
- Well point jobs
- De-watering services
- Emergency response irrigation
- Flood zone

...we offer **complete** sales and service to develop the right assemblies for your application

Proven Experience

Keeping your operation running smoothly means having dependable assemblies to handle your applications. You can't afford downtime due to repairs or maintenance that cost both time and money. For more than 30 years, **JGB® Enterprises, Inc.** has provided high quality hose, fittings & custom assemblies for the most challenging applications in the following industries:

- Petroleum
- Automotive
- Marine
- Chemicals
- Construction
- Agriculture
- Food
- Military



JGB® Enterprise's Techmaflex PES-500 Large Bore Hose Assembly Machine allows for crimping capabilities of up to 12".

*JGB® Enterprises, Inc. continually strives to be **THE** leader in hose, fittings, and hose assemblies by responding to your needs and supplying only the highest quality, dependable products you require to ensure uptime, productivity, and profitability!*

Table of Contents

LARGE DIAMETER HOSE (LDH) 5

EAGLE PUMP® HD 150.....	5
EAGLE ORANGE/CLEAR SUCTION & DISCHARGE HOSE	6
EAGLE TANK TRUCK® 150 PSI HOSE.....	7
EAGLE O.S.& D.® HOSE	8
EAGLE WATER DISCHARGE 150 PSI HOSE	8
EAGLE COMPOSITE® HOSE	9
EAGLE SUPER FLOW NITRILE HOSE.....	10
EAGLE RED PVC HD DISCHARGE HOSE	11
EAGLE FLO® BLUE PVC DISCHARGE HOSE	12
AGRIFLEX.....	12
EAGLE WATER TRANSFER PU HD LAY FLAT HOSE	13
HEAVY DUTY NITRILE LAYFLAT WATER TRANSFER HOSE.....	13
EAGLE AIR® WIRE REINFORCED HOSE.....	14
EAGLE 150PSI NITRILE® LAYFLAT HOSE	14
EAGLE 700 METAL HOSE.....	15
*ENVIRODUCT® HOSE.....	16

VALVES..... 17

CHECK VALVES	17
KNIFE GATE VALVE.....	17
BUTTERFLY VALVE-LUG STYLE	17
BUTTERFLY VALVE-WAFER STYLE	17
FLANGED GATE VALVES	17

BAUER TYPE FITTINGS..... 18

MALE BAUER X SHANK.....	18
MALE BAUER X MPT SHORT BALL	18
FEMALE BAUER X MPT	18
FEMALE BAUER X ANSI FLANGE	18
FEMALE BAUER X SHANK.....	18
MALE BAUER X MPT LONG BALL.....	18
MALE BAUER X ANSI FLANGE	18
MALE X FEMALE BAUER 45°	18
MALE X FEMALE BAUER 90°	19
BAUER REDUCER.....	19
BAUER PLUG	19
BAUER LOCKING LEVER.....	19
BAUER TYPE SEWER STRAINER.....	19
DOUBLE FEMALE “Y” BAUER.....	19
BAUER INCREASER	19
BAUER CAP.....	19
BAUER O-RING.....	19

BAUER TYPE FITTINGS CONT.

FLAPPER CHECK VALVE BAUER KIT	20
KNIFE GATE VALVE BAUER KIT.....	20
10 POSITION BUTTERFLY VALVE BAUER KIT.....	20

BAUER TYPE PIPE 21

BAUER PIPE GALVANIZED	21
HDPE PIPE	21
BEST & MOST RELIABLE WELLPOINT SYSTEM.....	22
PIPE/HOSE STORAGE RACK	23
BLUE FITTINGS CAGE.....	24

HYDRAULIC HOSE ASSEMBLIES 25

J-FLEX® 100R12.....	25
J-FLEX® 100R13.....	25

COUPLERS, PLUGS, FLANGES & NUT, BOLT GASKET KITS 26

LOW PRESSURE WING NUT COUPLER.....	26
HIGH PRESSURE WING NUT COUPLER.....	26
FLANGE REDUCER / INCREASER.....	26
FLANGE "T".....	26
LOW PRESSURE WING NUT PLUG.....	26
HIGH PRESSURE WING NUT PLUG.....	26
FLANGE "Y"	26
FLANGE X FLANGE 45°	26
FLANGE "T"	27
FLANGE X FLANGE 90°	27
FLANGE X FLANGE 45°	27
NUT, BOLT, & GASKET KIT	27
ALL THREAD / NUT FLANGE KIT.....	28

NEPTUNE FLOTATION PIPE FLOATS 29

EAGLE PUMP® HD 150

Application: Water suction and discharge in industrial and construction services

Tube: Natural and Synthetic Rubber

Reinforcement: High tensile synthetic textile and steel helix wire

Cover: Abrasion and weather resistant synthetic rubber

Temperature: -22°F to 185°F



Bulk

PART #	ID	OD	WP	VACUUM RATING	BURST	BEND RADIUS	WEIGHT
	in	in	psi	in/Hg	psi	in	lbs/ft
004-0242-0150I	1-1/2	1.89	150	28	450	5	.73
004-0322-0150I	2	2.44	150	28	450	7	1.2
004-0482-0150I	3	3.50	150	28	450	12	1.9
004-0642-0150I	4	4.53	150	28	450	17	2.6
004-0962-0150I	6	6.61	150	24	450	27	4.9
004-1282-0150I	8	8.86	150	24	450	43	7.2
004-1602-0150I	10	10.98	150	24	450	59	12.2
004-1922-0150I	12	12.95	150	24	450	75	13.79

Assemblies: Coupled with MxF Bauer

PART #	SIZE
A004-0642-0010	4"x10' CRIMPED
A004-0643-8240	4"x20' CRIMPED
A004-0963-0010	6"x10' CRIMPED
A004-0963-0020	6"x20' CRIMPED
A004-1280-0010	8"x10' CRIMPED
A004-1280-0020	8"x20' CRIMPED
A004-1920-0010	12"x10' CRIMPED (A-STYLE ENDS)

EAGLE ORANGE/CLEAR SUCTION & DISCHARGE HOSE

Application: Designed for use in fish suction and rental/construction pumping
Construction: Flexible PVC, rigid PVC helix, synthetic braiding, smooth bore, corrugated O.D.
Temperature: -13°F to 140°F



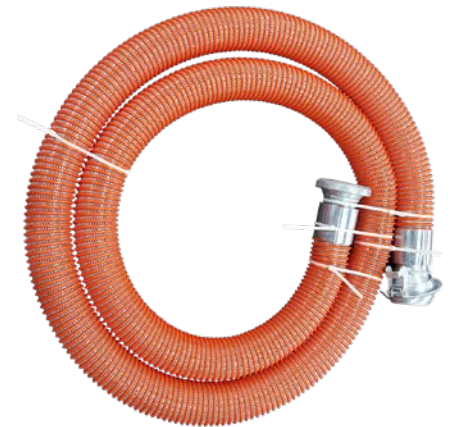
Features:

- Lightweight and flexible
- External helix provides for easy drag
- Rated for both suction & discharge
- Clear sidewall permits visual check of material flow

Bulk

PART #	ID	OD	WEIGHT	STD. LENGTH	WP	VACUUM RATING	MIN BEND RADIUS
	in	in	lbs/ft	ft	psi	in/Hg	in
007-0240-0100*	1-1/2	2.03	0.47	100	110	29	2.5
007-0320-0100I	2	2.60	0.69	100	100	29	4
007-0400-0100*	2-1/2	3.01	0.74	100	100	29	5
007-0480-0100I	3	3.70	1.13	100	100	28	6
007-0640-0080I	4	4.78	1.74	100	80	28	7
007-0960-0072I	6	7.17	3.88	20,60,100	70	28	10
007-1280-0060I	8	9.34	5.55	20,25	60	28	16
007-1600-0040I	10	11.63	8.90	20,25	40	28	25
015-0192-0020I	12	13.66	10.30	20	30	25	45

* Not standard - call for availability.



Assemblies: Coupled with MxF Bauer

PART #	SIZE
A007-0642-8121	4"x10' CRIMPED
A007-0642-8241	4"x20' CRIMPED
A007-0962-8120	6"x10' CRIMPED
A007-0962-8241	6"x20' CRIMPED
A007-1282-8120	8"x10' CRIMPED
A007-1282-8241	8"x20' CRIMPED
A007-1922-8120	12"x10' CRIMPED (A-STYLE ENDS)

EAGLE TANK TRUCK® 150 PSI HOSE

- Application:** For tank truck, bulk petroleum stations & in- plant oil service
- Tube:** Oil resistant, black conductive Nitrile (NBR)
- Reinforcement:** Synthetic textile and twin helix steel wire
- Cover:** Black, abrasion, ozone, weather, heat and oil resistant neoprene rubber
- Temperature:** Suitable for use in the range -40°F to 180°F



Bulk

PART #	ID	OD	WORKING PRESSURE	BEND RADIUS	WEIGHT
	in	in	psi	in	lb./ft.
009-0242-0125I	1-1/2	1.93	150	4	0.92
009-0322-0125I	2	2.48	150	7	1.10
009-0402-0150I	2-1/2	3.00	150	9	1.59
009-0482-0124I	3	3.50	150	9	1.86
009-0642-0150I	4	4.61	150	15	2.72
009-0962-0150I	6	6.69	150	26	5.21
009-1282-0150I	8	8.9	150	40	8.40

* Full Vacuum * 2", 2-1/2" meet SAE 100R4 specifications

Assemblies: Coupled with MxF Bauer

PART #	SIZE
A009-0640-0010	4"x10' CRIMPED
A009-0640-0020	4"x20' CRIMPED
A009-0960-0010	6"x10' CRIMPED
A009-0960-0020	6"x20' CRIMPED
A009-1281-0010	8"x10' CRIMPED
A009-1280-0020	8"x20' CRIMPED

EAGLE O.S.& D.® HOSE

- Application:** For oil/water suction and delivery service. Full vacuum.
- Tube:** Oil and fuel resistant conductive nitrile (NBR), 50% Aromatics
- Reinforcement:** Multiple high tensile synthetic polyester cords with round steel wire and rubber helix
- Cover:** Oil, weather and ozone resistant, cloth impression, black synthetic rubber
- Temperature:** -40°F to 194°F
- Couplings:** Built-in pipe flanges fixed x floating (ANSI B16.5)
- Safety Factor:** 4:1
- Branding:** EAGLE OIL SERVICE S&D CARGO 250 MAX WP #Q### MEETS USCG 33CFR 154.500



Assemblies: Coupled with Built-In 150# Flange

PART #		ID	OD	WP	BEND RADIUS	WEIGHT* (lbs)	
10'	20'	in	in	psi	in	10'	20'
**	009-0483-0020	3	4-3/4	250	15	-	110
**	009-0643-0020	4	5-1/2	250	19	100	176
009-0963-0010	009-0963-0020	6	7-1/2	250	29	183	265
009-1283-0010	009-1283-0020	8	9-1/2	250	38	214	368
009-1603-0010	009-1603-0020	10	11-1/2	250	48	342	540
009-1923-0010	009-1923-0020	12	13-3/4	250	48	503	732
009-2242-0010	009-2240-0020	14	15-3/4	250	68	573	845
009-0256-0010	009-0256-0020	16	17-3/4	250	78	765	1130
009-2883-0010	009-2883-0020	18	20	250	106	946	1408

* Assembled weight

** Made to Order

EAGLE WATER DISCHARGE 150 PSI HOSE

- Application:** For water discharge applications in construction, industry and agriculture
- Tube:** Synthetic rubber
- Reinforcement:** 4 Ply, High tensile synthetic textile
- Cover:** Weather and ozone resistant synthetic rubber
- Temperature:** -13°F to 158°F
- Branding:** EAGLE WATER DISCHARGE 150 PSI WP
- Couplings:** Contact JGB® for proper fitting recommendation and coupling procedure



PART #	ID		OD	MAX OPER PRESSURE	BURST PRESSURE	WEIGHT	LENGTH
	DN	in	in	psi	psi	lbs/ft	ft
005-0242-0150I	38	1.50	1.85	150	450	0.60	100
005-0322-0150I	51	2.00	2.36	150	450	0.80	100
005-0402-0150I	60	2.50	2.91	150	450	1.12	100
005-0482-0150I	80	3.00	3.46	150	450	1.47	100
005-0642-0150I	102	4.00	4.53	150	450	2.21	100
005-0962-0150I	150	6.00	6.50	150	450	3.07	100
005-1282-0150I	200	8.00	8.74	150	450	5.45	20
005-1602-0150I	250	10.00	10.63	150	450	7.17	20

EAGLE COMPOSITE® HOSE

(Approved by DNV GL / *Complies with USCG 33CFR 154.500)

- Application:** Recommended for loading and unloading barges, ocean tanker & bunkering services, and other doc side operations. Suction and Discharge of Gasoline, Diesel fuel, Paraffin, Kerosene, Lubricating Oils, 100% aromatics, black oils and heavy lubricants and solvents
- Carcass:** Multiple layers of polypropylene fabric, film and polyester barrier layers
- Reinforcement:** High tensile strength galvanized inner and outer wire
- Cover:** Abrasion resistant PVC impregnated fabric
- Temperature:** -22°F to 176°F
- Flange:** Fix x floating per ANSI B 16.5 CARBON STEEL 150LBS SPECIFICATION (*Complies with USCG 33CFR 154.500)
- Vic:** Standard cut groove carbon steel vic
- Branding:** EAGLE COMPOSITE® OIL SERVICE S&D CARGO 200PSI MAX WP #Q## USCG 33CFR 154.500



Features:

- Complete product compatibility for safe handling of all types of oil based 100% aromatic
- Tough PVC outer cover resists to dragging, wear, abrasion, UV and ozone resistance having maximum durability and safety
- Electrical continuity is achieved by the two wire bonded to the end fitting, this helps dissipate accumulated charge and to avoid static flash

PART #	ID	WP	BURST	BEND RADIUS	WEIGHT	MAX LENGTH
	in	psi	psi	in	lbs/ft	ft
006-0642-0010I/0020I	4	200	850	16	3.5	65
006-0462-0010I /0020I	6	200	850	23	7.7	65
006-1280-0010I /0020I	8	200	850	32	12.0	65
006-1600-0010I /0020I	10	200	850	40	16.9	40
006-1920-0010I / 0020I	12	200	850	47	19.8	40

Approximate weight of Fix x Floating Flange

HOSE SIZE	HOSE LENGTH	WEIGHT of ASSEMBLY	HOSE LENGTH	WEIGHT of ASSEMBLY
in	ft	lbs	ft	lbs
4	10	70.55	20	99.20
6	10	160.94	20	233.69
8	10	264.56	20	381.40
10	10	363.76	20	507.06
12	10	551.25	20	760.01

Approximate weight of Vic x Vic

HOSE SIZE	HOSE LENGTH	WEIGHT of ASSEMBLY	HOSE LENGTH	WEIGHT of ASSEMBLY
in	ft	lbs	ft	lbs
4	10	52.91	20	85.98
6	10	136.69	20	209.44
8	10	227.08	20	343.92
10	10	319.67	20	462.97
12	10	396.43	20	696.16

* EAGLE FLEX-Pump assemblies are tested at 1.5 times working pressure.

EAGLE SUPER FLOW NITRILE HOSE

- Application:** Wide range of applications including irrigation, agriculture, general watering, dewatering, drainage, pump discharge, flotation booms, cable covering, industrial washdown, hydraulic fracturing, and general discharge applications
- Tube:** 100% high tenacity synthetic polyester yarn, circularly woven and protected by a through-the-weave extruded PVC/Nitrile rubber, forming a single homogeneous construction without the use of glues or adhesives of any type
- Reinforcement:** Synthetic woven liner reinforcement
- Cover:** Ribbed nitrile rubber cover in black or red
- Temperature:** -20°F to 176°F
- Lengths:** Available to 300 feet



Bulk

PART #	ID	WALL	WP	WEIGHT
	in	in	psi	lb./ft.
008-1282-0150I	8	.155	200	1.95
008-1600-0150	10	.175	150	2.95
008-1920-0020	12	.14	100	2.52

Assemblies: Coupled With Camlock or Bauer

PART #	SIZE
A008-0322-3550	2"x50' COUPLED W/ MxF CAMLOCKS
A008-0482-3550	3"x50' COUPLED W/ MxF CAMLOCKS
A008-0642-0600	4"x50' COUPLED W/ MxF CAMLOCKS
A008-0642-8602	4"x50' COUPLED W/ MxF BAUER
A008-0962-8602	6"x50' COUPLED W/ MxF BAUER
A008-1282-8602	8"x50' COUPLED W/ MxF BAUER
A008-0160-0025	10"x25' COUPLED W/ MxF BAUER
A008-1920-0025	12"x25' COUPLED W/ MxF BAUER

EAGLE RED PVC HD DISCHARGE HOSE

- Application:** Use for heavy duty agricultural, quarry, irrigation, mining, construction and industrial applications
- Tube:** Premium Red PVC
- Reinforcement:** Two spiral plies and longitudinal silk cords
- Cover:** Premium Red PVC
- Temperature:** -10°F to 150°F
- Branding:** EAGLE WATER DISCHARGE HD
- Packaging:** Cut and coupled to length
- Couplings:** Standard short shank aluminum, malleable or brass couplings, Steel Bauer



Bulk

PART #	ID	WALL THICKNESS	WP	WEIGHT
	in	in	psi	lb./ft.
008-0321-0150I	2	.080	150	.28
008-0481-0150I	3	.095	150	.54
008-0641-0125I	4	.100	125	.67
008-0961-0115I	6	.105	115	1.25
008-1281-0070I	8	.110	70	1.48
008-1926-0040I	12	.112	40	2.43

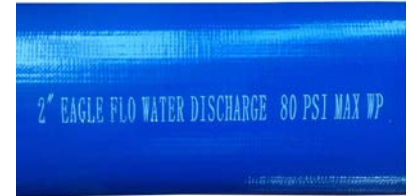


Assemblies

PART #	SIZE
A008-0321-3550	2"x50' COUPLED W/ MxF CAMLOCKS
A008-0481-0050	3"x50' COUPLED W/ MxF CAMLOCKS
A008-0641-3550	4"x50' COUPLED W/ MxF CAMLOCKS
A008-0642-8603	4"x50' COUPLED W/ MxF BAUERS
A008-0962-8603	6"x50' COUPLED W/ MxF BAUER
A008-1282-8603	8"x50' COUPLED W/ MxF BAUER

EAGLE FLO® BLUE PVC DISCHARGE HOSE

- Application:** Use for light duty, general purpose agricultural, irrigation, and construction applications
- Tube:** Blue PVC
- Reinforcement:** Polyester yarn
- Cover:** Blue PVC
- Temperature:** -4°F to 150°F
- Couplings:** Standard short shank aluminum, malleable or brass couplings



Bulk

PART #	ID	THICKNESS	WP	WEIGHT
	in	in	psi	lb./ft.
008-0166-0070I	1	0.051	70	0.10
008-0246-0080I	1.5	0.055	80	0.17
008-0326-0080I	2	0.060	80	0.23
008-0486-0070I	3	0.063	70	0.40
008-0646-0070I	4	0.063	70	0.52
008-0966-0050I	6	0.071	50	0.85

Assemblies

STANDARD SIZE	M x F	C x E
1-1/2"x50'	A008-0246-1650	A008-0246-3550
2"x50'	A008-0326-1650	A008-0326-3550
3"x50'	A008-0486-1650	A008-0486-3550
4"x50'	A008-0646-1650	A008-0646-3550
6"x50'	A008-0966-1650	A008-0966-3550

AGRIFLEX

- Application:** Heavy duty use for soft hose travelers, liquid manuring and everyday heavy-duty water delivery
- Construction:** Synthetic woven liner of high tenacity synthetic yarn totally protected and encapsulated in and extruded through the weave nitrile/PVC tube. The special nitrile-PVC elastomer has increased resistance to Ozone and Abrasion.
- Temperature:** -4°F to 175°F



Bulk

ID	WEIGHT	WALL	BURST TEST	TENSILE STRENGTH
in	lb.	in	psi	tons (US)
(4) 4 3/16	0.90	0.140	750	12.5
(4.5) 4 11/16	1.00	0.140	750	14.0
(5) 5 3/16	1.10	0.140	600	15.2
(6) 6 3/16	1.35	0.140	750	18.9
(7) 7 1/16	1.85	0.140	600	25.9
(8) 8 3/16	2.35	0.170	450	26.1
(10) 10 1/16	3.30	0.175	450	41.7

Assemblies:

PART #	SIZE
A008-960-0660	6"x660'
A008-1280-0660	8"x660'
A008-1600-0660	10"x660'

EAGLE WATER TRANSFER PU HD LAY FLAT HOSE

Application: Heavy-duty, large diameter, polyurethane layflat hose designed for construction sites, waste water industry, agriculture and mining, transport of abrasive materials, flexible pipeline even in extreme terrain, irrigation and sludge disposal, for heavy duty service under toughest conditions. Perfectly prepared for hydraulic fraction in shales and oil fields.

Tube: PU

Reinforcement: Polyester-Nylon textile

Cover: PU, ribbed or smooth

Temperature: -58°F to 176°F

Lengths: 100, 200, 300, 330 or 660 feet

Packaging: Rolled, packed on steel reel

Manufacturing Technology: Extruded-Through-the-Weave technology

JGB's Eagle Water Transfer PU is coupled with forged fittings versus sand casted fittings, making them the strongest in the industry!



ID	OD	WP	BURST PRESSURE	WALL THICKNESS	WEIGHT	TENSILE STRENGTH
in	in	psi	psi	in	lbs/ft	lbs.
6	6-5/16	200	600	0.150	141	33000
8	8-5/16	200	600	0.150	1.94	89000
10	10-3/8	200	600	0.165	2.75	100100
12	12-7/16	200	450	0.165	3.33	134000
14	14-1/2	150	450	0.205	4.96	178574
16	16-7/16	100	300	0.205	5.09	66140

JGB's PU Hose is rated for all produce water applications. Powder Coated field ends are available for produce water applications.



HEAVY DUTY NITRILE LAYFLAT WATER TRANSFER HOSE

Application: Used for irrigation, pumping of sludge or liquid fertilizers

Tube: Black nitrile rubber

Reinforcement: High-tenacity synthetic reinforced jacket

Cover: Nitrile Rubber, Ribbed cover or smooth cover

Packaging: Rolled, packed on steel reel

Standard Length: 100 ft, 200 ft, 300 ft, 330 ft, 660 ft

Color: Available in black

Manufacturing Technology: Three-ply technology or through-the-weave technology without delamination issue



ID		MAX LENGTH	WORKING PRESSURE	BURST PRESSURE	WEIGHT	TENSILE STRENGTH
in	mm	ft	psi	psi	lbs/ft	lbs
8	204	660	200	600	2.48	81,500
10	254	660	190	570	3.02	100,000
12	306	660	180	540	3.62	124,000

EAGLE AIR® WIRE REINFORCED HOSE

High Pressure Wire Reinforcement air hose for heavy duty use in Construction, Pneumatic Drilling, Mines and Quarries

ID	OD	MAX WP	WEIGHT	PART #
in	in	psi	lbs./ft.	
2	2.60	600	1.69	003-0323-0600I
3	3.70	600	3.02	003-0483-0600I
4	4.80	600	4.54	003-0640-0500I
6	7.12	600	8.03	003-0963-0600I

STANDARD SIZE	PRE-ASSEMBLED FXF GROUND JOINT WITH BOLT CLAMPS PART #
2'x50'	A003-0320-3050



EAGLE 150PSI NITRILE® LAYFLAT HOSE

- Designed as a dependable & durable, yet lightweight and flexible solution for high volume, high pressure water transfer applications
- The nitrile layflat allows for quick layout and retrieval and is typically used in irrigation, sewage, and general pumping duties
- Suitable for use and recommended for INDUSTRIAL and AGRICULTURE applications in:
 - » Dewatering operations
 - » Irrigation
 - » Sewage and general pumping applications

Tube: Blend of synthetic elastomers, smooth, oil resistant, black
Reinforcement: Single high tensile textile braid
Cover: Blend of synthetic elastomers compound, ribbed finish
Temperature: Suitable range -4°F to 176°F
Lengths: 100 ft. standard lengths (Longer lengths available on request)
Colors: Black, Orange, or Yellow



This hose is constructed using an "Extruded Thru the Weave" (ETW) manufacturing process.

PART #	NOM. ID	THICKNESS	WP	BURST	TENSILE STRENGTH	BEND RADIUS	WEIGHT
	in	in	psi	psi	lbs	ft	lbs/ft
008-0242-1150I	1 1/2	.08	150	450	6500	2.30	0.21
008-0322-1150I	2	.08	150	450	8250	3.60	0.30
008-0402-1150I	3	.10	150	450	11750	4.75	0.47
008-0642-1150I	4	.10	150	450	17400	5.60	0.70
008-1282-1150I	6	.12	150	450	36000	7.40	1.27
*008-0962-0200	6	.16	200	600	51600	2.00	1.68
008-1602-1150I	8	.13	150	450	51950	9.85	1.85
*008-1202-0200	8	.16	200	600	77150	2.50	2.00
008-1600-0175	10	.15	175	525	110250	10.00	2.65
008-1922-1150I	12	.16	150	450	101400	11.00	3.42

* Heavy-Duty

EAGLE 700 METAL HOSE

Construction: SS 316L Corrugated Flexible Hose with SS 304 Double Wire Braiding
Couplings: TIG Welded with 150# SS 316 Swivel flanges at both ends with SS 316 Sch.40 Stub end
Safety: 4:1



Quality Certifications & Testing:

- Every single hose assembly is hydraulically tested at 1.5 times the working pressure
- Manufacturer is ISO-9001:2008 certified by TUVNORD, Germany
- "CE" Certification by DNV
- "ISO 14001:2004"
- PED Certified

PART #	PART #	ID	NOM ID	NOM OD	STATIC BEND RADIUS	DYNAMIC BEND RADIUS	MAX WP	WEIGHT	
								lbs	
10 ft. length	20 ft length	in	in	in	in	in	psi	10'	20'
106-0160-0710	106-0160-0720	1	1	1.63	3	9	1137	31	53
106-0320-0710	106-0320-0720	2	1.98	2.77	5	15	867	44	76
106-0480-0710	106-0480-0720	3	3.15	3.99	9	22	526	61	103
106-0640-0710	106-0640-0720	4	4.36	5.06	10	24	455	98	163
106-0960-0710	106-0960-0720	6	5.93	7.12	18	31	312	163	277
106-1280-0710	106-1280-0720	8	7.76	9.29	19	37	270	251	421
106-1600-0710	106-1600-0720	10	9.86	11.45	25	51	174	267	423
106-1920-0710	106-1920-0720	12	11.82	13.5	31	61	151	353	553

*ENVIRODUCT® HOSE

These products are not recommended for aircraft ground support applications.

1399-SD/1899-HD *Insulated and Non-Insulated EnviroDuct®*

Application: Air conditioning, ambient air movement, dehumidification
Construction: PVC/Polyester Substrate with Steel Wire Helix, Sewn Construction
Weight: 1399-SD: 13 oz./yd.² (441 g/m²), 1899-HD: 18 oz./yd.² (610 g/m²)
Temperature: -20° to 180° F (-29° to 82° C)



	Pitch	Diameters
Standard Pitch:	3" (7.5 cm) 4" (10 cm)	6" & 7" (150 & 200 mm) 8" (200 mm) or Larger
Expanded Pitch:	7" (18 cm)	12" (300 mm) or Larger

Wire: Hard-Drawn Steel
Inside Diameter: 6" - 36" (150 - 900 mm)
Length: 15', 25' (4.5, 7.5 m)
Color: Black, Blue, Desert Tan, Green, Olive Drab, Red, White, Yellow
Optional Wearstrip: Heavy-Duty Extruded PVC
Optional End Finishes: Belt Cuff, Soft Cuff, Wire Rope Coupling

High Polish

Application: Air conditioning, ambient air movement, dehumidification, drying, general purpose blower hose
Construction: PVC/Polyester Substrate with Steel Wire Helix, Sewn Construction
Weight: 14 oz./yd.² (475 g/m²)
Temperature: -20° to 180° F (-29° to 82° C)



	Pitch	Diameters
Standard Pitch:	3" (7.5 cm) 4" (10 cm)	6" & 7" (150 & 200 mm) Diameters 8" (200 mm) & Larger Diameters
Expanded Pitch:	7" (18 cm)	12" (300 mm) and Larger Diameters

Wire: Hard-Drawn Steel
Inside Diameter: 6" - 36" (150 - 900 mm)
Length: 15', 25' (4.5, 7.5 m)
Color: White
Optional Wearstrip: Heavy-Duty Extruded PVC
Optional End Finishes: Belt Cuff, Soft Cuff, Wire Rope Coupling, Screw Clamp Cuff, Zipper Cuff

15WK *Insulated and Non-Insulated EnviroDuct®*

Application: Portable heater ducting with moderately high heat content
Construction: Thermoplastic Elastomer with Warp Knit Backer, Steel Wire Helix, Sewn Construction
Weight: 15 oz./yd.² (509 g/m²)
Temperature: -65° to 350° F (-54° to 177° C) Intermittent



	Pitch	Diameters
Standard Pitch:	3" (7.5 cm) 4" (10 cm)	6" & 7" (150 & 200 mm) 8" (200 mm) or Larger
Expanded Pitch:	7" (18 cm)	12" (300 mm) or Larger

Wire: Hard-Drawn Steel
Inside Diameter: 6" - 36" (150 - 900 mm) Larger diameters available upon request.
Length: 15', 25' (4.5, 7.5 m)
Color: Black, Desert Tan, Olive Drab, White, Yellow
Optional Wearstrip: Heavy-Duty Extruded PVC
Optional End Finishes: Pinlock Coupling, Belt Cuff, Wire Rope Coupling, Soft Cuff

* EnviroDuct® is a registered trademark of ABC Industries, Inc.

CHECK VALVES



PART #	SIZE
039-0400-CXS	4"
039-0600-CXS	6"
039-0800-CXS	8"
039-1000-CXS	10"
039-1200-CXS	12"
039-1600-CXS	16"

BUTTERFLY VALVE-WAFER STYLE



PART #	SIZE
026-BFVW400	4"
026-BFVW600	6"
026-1280-0004	8"
039-1600-0001	10"
039-1925-1920	12"
039-BFVW2560	16"

KNIFE GATE VALVE



PART #	SIZE
039-0320-00KV	2"
039-0480-00KV	3"
039-0640-00KV	4"
039-0960-00KV	6"
039-1280-00KV	8"
039-1600-00KV	10"
039-19200-00KV	12"
039-2560-00KV	16"
039-3840-00KV	24"

FLANGED GATE VALVES



PART #	SIZE
102-274607	2"
026-0483-0480	3"
026-0642-0640	4"
026-0960-0072	6"
026-0128-0001	8"
039-1602-1600	10"
039-1922-1920	12"
039-2561-0150	16"

BUTTERFLY VALVE-LUG STYLE



PART #	SIZE
026-BFVL400	4"
039-0969-0096	6"
026-BFVL800	8"
039-BFVL1600	10"
039-BFVL1920	12"
039-BFVL2560	16"



MALE BAUER X SHANK



PART #	SIZE
102-MC3094I	4"
102-MC3096I	6"
102-MC3098I	8"
102-MC30910I	10"
102-MC21112I	12"

4" to 8" Type B
10" & 12" Type A

FEMALE BAUER X SHANK



PART #	SIZE
102-FC3104I	4"
102-FC3106I	6"
102-FC3108I	8"
102-FC31010I	10"
102-FC21212I	12"

4" to 8" Type B
10" & 12" Type A

MALE BAUER X MPT SHORT BALL



PART #	SIZE
102-MCM3114	4"
102-MCM3116	6"
102-MCM3118	8"

MALE BAUER X MPT LONG BALL



PART #	SIZE
102-020BMT4	4"
102-020BMT6	6"
102-020BMT8	8"

FEMALE BAUER X MPT



PART #	SIZE
102-FCM3124	4"
102-FCM3126	6"
102-FCM3128	8"

MALE BAUER X ANSI FLANGE



PART #	SIZE
102-MC3134	4"
102-MC3136	6"
102-MC3138	8"
102-MC22210	10"
026-0192-0192	12"

4" to 8" Type B
10" & 12" Type A

FEMALE BAUER X ANSI FLANGE



PART #	SIZE
102-FC3144	4"
102-FC3146	6"
102-FC3148	8"
A:102-FC22310 B:102-FC31410	10"
A: 026-0191-0192 B: 026-0191-0192B	12"

4" to 8" Type B
10" & 12" Type A/B

MALE X FEMALE BAUER 45°



PART #	SIZE
026-0640-0045	4"
026-0960-0045	6"
026-0128-2828	8"

MALE X FEMALE BAUER 90°



PART #	SIZE
026-0640-0090	4"
026-0960-0090	6"
026-0128-0090	8"

DOUBLE FEMALE "Y" BAUER



PART #	SIZE
026-0641-0640	4"
026-0960-0YM6	6"
026-0128-2828	8"

BAUER REDUCER



PART #	SIZE
026-0961-0480	6"FX4"M
102-FRM3-1886	8"FX6"M

BAUER INCREASER



PART #	SIZE
026-0960-0480	4"FX6"M
102-FMI3-1968	6"FX8"M

BAUER PLUG



PART #	SIZE
026-0480-EP40	4"
026-960-EP60	6"
026-1280-EP80	8"

BAUER CAP



PART #	SIZE
026-0640-0000	4"
026-0960-0000	6"
026-0128-0002	8"

BAUER LOCKING LEVER



PART #	SIZE
102-273LR4	4"
102-273LR6	6"
102-273LR8	8"

BAUER O-RING



PART #	SIZE
022-0640-OR40	4"
022-0960-OR60	6"
022-1280-OR80	8"
022-1920-OR12	12"

BAUER TYPE SEWER STRAINER



PART #	SIZE
102-0642-064SI	4"
102-0962-096SI	6"
102-1282-128SI	8"

FLAPPER CHECK VALVE BAUER KIT



Check Valve CPLD MxF Bauer

SIZE	DESCRIPTION	PART #
3"	CHECK VALVE CPLD MxF BAUER	039-0486-0001
4"	CHECK VALVE CPLD MxF BAUER	039-0646-0001
6"	CHECK VALVE CPLD MxF BAUER	039-0966-0001
8"	CHECK VALVE CPLD MxF BAUER	039-1286-0001
12"	CHECK VALVE CPLD MxF BAUER B-STYLE	039-1926-0001
12"	CHECK VALVE CPLD MxF BAUER A-STYLE	039-1926-0002

KNIFE GATE VALVE BAUER KIT



Knife Gate Valve CPLD MxF Bauer

SIZE	DESCRIPTION	PART #
3"	KNIFE GATE VALVE CPLD MxF BAUER	039-0486-0001
4"	KNIFE GATE VALVE CPLD MxF BAUER	039-0646-0001
6"	KNIFE GATE VALVE CPLD MxF BAUER	039-0966-0001
8"	KNIFE GATE VALVE CPLD MxF BAUER	039-1286-0001
12	KNIFE GATE VALVE CPLD MxF BAUER B-STYLE	039-1926-0001

10 POSITION BUTTERFLY VALVE BAUER KIT



Butterfly Valve CPLD MxF Bauer

SIZE	DESCRIPTION	PART #
3"	Butterfly Valve CPLD MxF BAUER	039-0486-0002
4"	Butterfly Valve CPLD MxF BAUER	039-0646-0002
6"	Butterfly Valve CPLD MxF BAUER	039-0966-0002
8"	Butterfly Valve CPLD MxF BAUER	039-1286-0002

BAUER TYPE PIPE GALVANIZED

- Application:** Can be used for suction or pressure applications to move any fluid substance
- Construction:** Steel Pipe coated with zinc
- Temperature:** Up to 230°F



Assemblies: MXF

PART #	PART #	SIZE
		4"x10'
039-0640-0020		4"x20'
039-0961-0010		6"x10'
039-0961-0020		6"x20'
039-1280-0010		8"x10'
039-1280-0020		8"x20'
039-1921-0010		12"x10'

HDPE PIPE

- Application:** Great for short-term, temporary applications. HDPE pipe can be used for; clean water, storm drain, sewer by-pass, transmission lines
- Construction:** High Density Polyethylene
- Temperature:** Up to 140°F



Assemblies: MXF

PART #	PART #	SIZE
102-0641-0010		4"x10'
102-0641-0020		4"x20'
102-0960-0010		6"x10'
102-0960-0020		6"x20'
102-1280-0010		8"x10'
102-1280-0020		8"x20'

* Sizes to 16" ID, contact JGB for availability

BEST & MOST RELIABLE WELLPOINT SYSTEM



Header Pipe:

6" Type B Pipe 20ft long
With 6 x 2" Female Type B
PROD # 102-0962-0020



Elbow:

2" Type B Male Elbow
With 1 1/2" Male NPT
PROD # 026-0320-2490



Wellpoint Jumper Hose
or
Swing Joint Hose Assembly

PIPE/HOSE STORAGE RACK

- Saves valuable yard space
- Prevents pipe & coupling damage
- Helps manage job site inventory
- Powder coat painted finish in yellow, blue, or gray
- Heavy-duty fork sleeves
- 2500 lbs. load capacity
- Can stack three high
- 6" x 6" stacking targets
- Removable posts
- Breaks down when not in use

Yard space is always at a premium, and with product continually moving in and out, you need a storage system designed to handle this tough environment.

JGB®'s Pipe/Hose Storage Racks increase storage space, improve efficiency in transport, and prevent pipe damage. Racks are transportable and stackable, and have heavy-duty loading fork sleeves on all sides for easy loading onto a flatbed trailer.

Job site tough, JGB's Pipe/Hose Storage Racks will also decrease assembly and disassembly on long pipe runs.

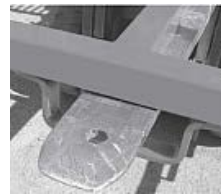


PART #	SIZE (IN)
039-PIPERACK-L	41-1/2 X 96
039-PIPERACK-XL	48 X 216



FOOT PADS:

6" X 6" target leg pads provide a sturdy base for stacking



FORK SLEEVES:

Two sets of fork sleeves allow for easy moving of racks



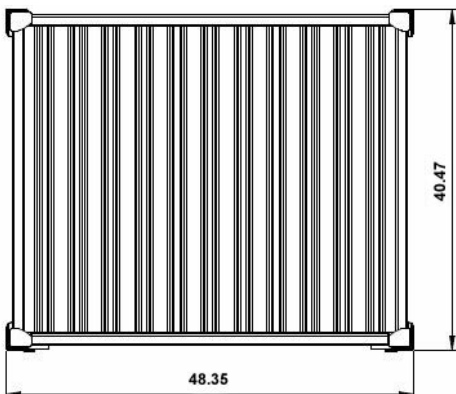
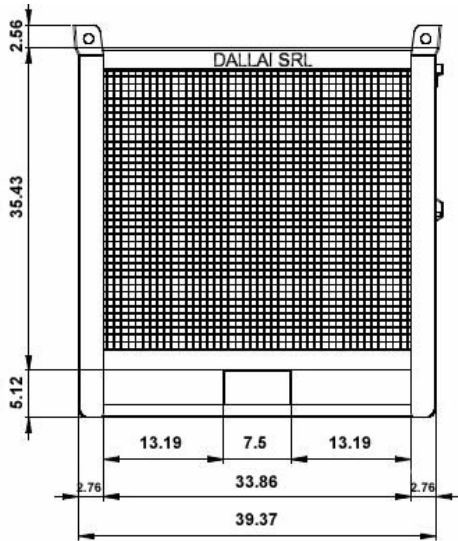
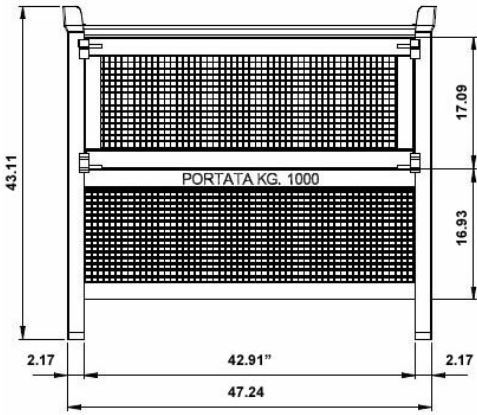
REMOVEABLE POSTS:

Leg posts are removable for ease of shipping, storage and assembly



BLUE FITTINGS CAGE

PART #
039-BLUE-CAGE



J-FLEX® 100R12

- Application:** For use in hydraulic applications where petroleum, water base, and synthetic hydraulic fluids are required
- Tube:** Synthetic Rubber
- Reinforcement:** 4 High tensile steel wire braids
- Cover:** MSHA approved synthetic rubber
- Temperature:** -40°F to 212°F



Assemblies

PART #	SIZE
A182-0120-0050	3/4"x50'
A182-0160-0050	1"x50'
A182-0200-0050	1-1/4"x50'
A182-0240-0050	1-1/2"x50'

J-FLEX® 100R13

- Application:** For use in hydraulic applications where petroleum, water base, and synthetic hydraulic fluids are required
- Tube:** Synthetic Rubber
- Reinforcement:** Up to 1" 4 high tensile steel wire spiral layers
From 1-1/4" 6 high tensile steel wire spiral layers
- Cover:** MSHA approved synthetic rubber
- Temperature:** -40°F to 212°F



Assemblies

PART #	SIZE
A182-0121-0050	3/4"x50'
A182-0161-0050	1"x50'
A182-0201-0050	1-1/4"x50'
A182-0241-0050	1-1/2"x50'



LOW PRESSURE WING NUT COUPLER



PART #	SIZE
039-6WF6-B	3/4"
039-8WF8-B	1"
039-10WF10-B	1-1/4"
039-12WF12-B	1-1/2"

LOW PRESSURE WING NUT PLUG



PART #	SIZE
039-W6F6-B	3/4"
039-W8F8-B	1"
039-W10F10-B	1-1/4"
039-W12F12-B	1-1/2"

HIGH PRESSURE WING NUT COUPLER



PART #	SIZE
102-7252-88795	3/4"
102-7252-88805	1"
102-7252-88815	1-1/4"
102-7252-88825	1-1/2"
102-7252-88835	2"

HIGH PRESSURE WING NUT PLUG



PART #	SIZE
102-7252-88745	3/4"
102-7552-88755	1"
102-7252-88765	1-1/4"
102-7252-88775	1-1/2"
102-7252-88785	2"

FLANGE REDUCER / INCREASER



PART #	SIZE
039-9664	4"X6"
039-12896	6"X8"
039-160-128	8"X10"
039-1208	8"X12"
039-1210	10"X12"

*AVAILABLE UP TO 24"

FLANGE "Y"



PART #	SIZE
039-0640-6401	4"
039-0962-9600	6"
039-1280-0150	8"
039-1603-1601	10"
039-0192-1921	12"

*AVAILABLE UP TO 24"

FLANGE "T"



PART #	SIZE
039-0640-6403	4"
039-0966-9600	6"
039-1280-0128	8"
039-1603-1600	10"
039-192-1920	12"

*AVAILABLE UP TO 24"

FLANGE X FLANGE 45°



PART #	SIZE
039-0640-6445	4"
039-0962-0045	6"
039-0218-0045	8"
039-0160-0045	10"
039-0192-0045	12"

*AVAILABLE UP TO 24"

FLANGE "T"



PART #	SIZE
039-0640-6403	4"
039-0966-9600	6"
039-1280-0128	8"
039-1603-1600	10"
039-192-1920	12"

*AVAILABLE UP TO 24"

FLANGE X FLANGE 45°



PART #	SIZE
039-0640-6445	4"
039-0962-0045	6"
039-0218-0045	8"
039-0160-0045	10"
039-0192-0045	12"

*AVAILABLE UP TO 24"

FLANGE X FLANGE 90°



PART #	SIZE
039-0640-6490	4"
039-BIC6FLA90	6"
039-0128-0108	8"
039-0161-0160	10"
026-01922-1290	12"

*AVAILABLE UP TO 24"

NUT, BOLT, & GASKET KIT



PART #	SIZE
039-BNG-1F802	2"
039-BNG-1F803	3"
039-BNG-1F804	4"
039-BNG-1F806	6"
039-BNG-1F808	8"
039-BNG-1F810	10"
039-BNG-1F812	12"
039-BNG-1F816	16"
039-BNG-1F824	24"

ALL THREAD / NUT FLANGE KIT

PART #	SIZE	DESCRIPTION
039-ATN-04	4"	Nut Flange Kit
039-ATN-06	6"	Nut Flange Kit
039-ATN-08	8"	Nut Flange Kit
039-ATN-10	10"	Nut Flange Kit

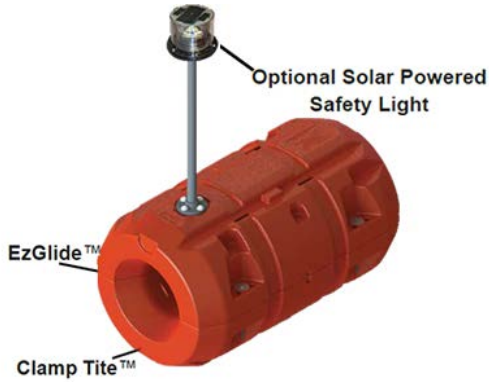


FITS FORGED STEEL FLANGES	NPS	# OF STUDS	DIAMETER OF STUD	LENGTH OF STUD
	IN		IN	IN
Class 150	1/2 to 24	4 to 20	1/2 to 1-1/4	2-1/2 to 7
Class 300	1/2 to 24	4 to 24	1/2 to 1-1/2	2-3/4 to 9-1/4
Class 400	1/2 to 24	4 to 24	1/2 to 1-3/4	3-1/4 to 10-3/4
Class 600	1/2 to 24	4 to 24	5/8 to 1-7/8	3-3/4 to 13
Class 900	1/2 to 24	4 to 20	3/4 to 2-1/2	4-1/2 to 17-1/2
Class 1500	1/2 to 24	4 to 16	3/4 to 3-1/2	4-1/2 to 24-1/2

* For precise measurements call JGB® Customer Service

NEPTUNE™ FLOTATION PIPE FLOATS

Pipe Floats fits pipe sizes ranging from 6" to 30"



How it works...

Clamp Tite™ technology ensures that Neptune™ Floats will not slip on your pipeline.

Compression points strategically placed throughout the Neptune™ Float compress and add friction to the dredge pipeline ensuring no slippage.

- Clamp Tite™** This optional feature compresses and adds friction to the pipeline preventing slippage. Neptune Flotation is proud to be the only supplier that has offered a solution to this common issue.
- Stack-N-Lock™** This feature solves common storage and transporting problems. Built in legs on the bottom of the float and molded-in recesses on the top of float allow for easy loading & unloading of containers & trucks using fork molded-in or hand trucks. Manual loading is no longer required recesses on the top of float allow for easy loading & unloading of containers & trucks using fork.
- EzGlide™** Tapered Ends on the outside of the Pipe Float decrease water and wind resistance. Tapered ends on the inside of float allow the pipeline to move freely.
- Safety Light** Clamp Tite™ ensures that Neptune™ Floats are secured onto the pipeline, allowing for easy installation of a safety light. This provides a complete solution for floating and marking dredge pipeline while meeting Coast Guard regulations.
- Safety Whip Flag** Alternate Neptune™ Floats with a Safety Whip Flag for improved daytime visibility.

OUTSIDE DIAMETER		INSIDE DIAMETER		OVERALL LENGTH		BUOYANCY AT 50%	
in	mm	in	mm	in	mm	lbs	kgs
36	914	14	350	44	1118	275	125



Your Hose & Fitting Connection

Click for locations:



New England Region

115 Metropolitan Park Dr.
Liverpool, NY 13088
(315) 451-2770



Great Lakes Region

2540 Walden Ave. Suite 150
Cheektowaga, NY 14225
(716) 684-8224



Midwest Region

242 Carondelet Commons Blvd.
St. Louis, MO 63111
(314) 256-0833



Mid-Atlantic Region

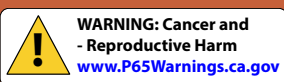
1407 Westinghouse Blvd. Suite B
Charlotte, NC 28273
(704) 588-9920



Gulf Coast Region

619 E Sam Houston Pkwy. Suite 200
Pasadena, TX 77503
(281) 930-7777

Liverpool Location ISO 9001:2015 Certified QMS by Intertek



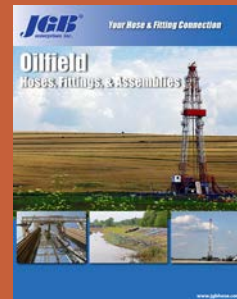
Additional Resources:



JGB Eagle Brand Master Catalog



Industrial Rental Catalog
Hoses, Fittings & Assemblies



Oilfield Catalog
Hoses, Fittings & Assemblies



Disaster Relief Catalog



Download the JGB® Mobile App



Connect with us:

